



Boy Scout Resident Camps



Cub Scout Resident Camps



2015 SUMMER CAMPS



Pathway To Adventure Council

PathwayToAdventure.org/Camps/

Cub Scout Day Camps



Webelos Resident Camp



Camp Blackhawk

The Adventure begins at Owasippe Scout Reservation

Boy Scout Resident Camp

Camp Blackhawk lies on the shores of Big Blue Lake and is rich in tradition, with roots dating back to the early days of Scouting. As one of the Owasippe Scout Reservation camps located in beautiful West Central Michigan, there are 4,800 acres to explore and enjoy.

Along with its long-standing traditions, Blackhawk also has modern facilities like the camp's handsome Dining Hall, which is filled three times a day with Scouts from all over the Midwest.

Blackhawk has 25 campsites located on hills overlooking Big Blue Lake. The sites have washstands, hot water showers and flush toilets.

Looking out from the Dining Hall, one can see beautiful Big Blue Lake, with its sandy swimming beach. Its docks are set up to create the perfect swimming hole. Swim instruction takes place here, while boating activities can be found down the beach.

The camp also offers great programs in Scoutcraft, Ecology/Conservation, Nature, and Aquatics, along with Shooting Sports and Handicraft. A wide variety of merit badges are offered in each program area.

Owasippe Scout Reservation
9900 Russell Rd.
Twin Lake, MI49457

Boy Scout Camp Fees

Scouts	\$ 280.00
Adults	\$ 165.00
Saturday Early Arrival	\$ 80.00

2015 Camping Schedule

I. June 28 – July 4	IV. July 19 – July 25
II. July 5 – July 11	V. July 26 – August 1
III. July 12 – July 18	VI. August 2 – Aug. 8

Owasippe Adventure and Outpost Programs

Diamond O Ranch The ranch offers horseback riding programs for Scouts and the Horsemanship merit badge.

Project C.O.P.E. This Challenging Outdoor Personal Experience builds both teamwork and self confidence.

Mountain Biking See the Owasippe wilderness as few others have. We will take you into seldom-seen areas on 23 miles of top-rated single-track bike trails.

Climbing Wall Enjoy the challenge of the climbing wall as you work on this merit badge.

Sail Base Take part in Motorboating, Small Boat Sailing, and Watersports merit badges and go tubing on the lake.

White River Canoe Trips Take a 3 hour or 6 hour canoe trip through the Manistee National Forest.

Photography Outpost Learn how to take pictures and how film was developed before the digital age.

Fishing Outpost Take a guided fishing trip on Owasippe's pontoon boat. This is open to Scouts and Leaders.

Owasippe Trail System Hike the trails at Owasippe and take in the remarkable and diverse ecosystem.

Merit Badges*

Archery
Art
Automotive Maint.
Basketry
Bird Study
Camping
Canoeing
Climbing
Cooking
Cycling
Emergency Prep.
Environmental Science
First Aid
Fish/Wildlife Manage.
Fishing
Forestry
Golf
Horsemanship
Indian Lore
Kayaking
Leatherwork
Lifesaving
Mammal Study
Motorboating
Nature
Orienteering
Photography
Pioneering
Pulp & Paper
Radio
Rifle
Rowing
Salesmanship
Sculpture
Scouting Heritage
Shotgun
Small Boat Sailing
Space Exploration
Swimming
Theater
Water Sports
Wilderness Survival
Woodcarving

*Some merit badges may be rotated in or out each summer to offer more variety to our returning Scouts.

America's Premier Scout Camp, Established in 1911
Sign Up Today at www.PathwayToAdventure.org/Camps/

CAMP MACH-KIN-O-SIEW

Boy Scout Resident Camp

Camp Mach-Kin-O-Siew Scouts will marvel at the beautiful forests and glacial lakes, as well as acres of bog that make up Camp Mach. The camp's 540 acres of natural splendor are home to 13 campsites and 8 program areas.

Camp Mach offers an experience true to Scouting's aims and methods, with meal preparation done by Scouts at their campsites. They pick up their fresh food supplies at the camp commissary, then prepare, cook and eat as a Patrol. Scouts will learn character and leadership skills, experience the Patrol Method, and strengthen their Troop during this incredible adventure.

The Camp Mach staff offers a very dynamic program for every Scout. Program areas include Scoutcraft, Shooting Sports, Handicraft, Ecology/Conservation, and Climbing, to name a few. A wide variety of merit badges are offered in all of these areas.

The Camp Mach staff is dedicated to making your adventure a memorable one. Our trained and experienced staff members are here to guide you through all of the camp's fun and exciting activities. Join us by signing up today.

Camp Mach-Kin-O-Siew is located at:
W11925 Outlet Drive
Elcho, WI 54438

Camp Mach Adventure Programs

High Adventure Outpost Program Do you like hiking, canoeing and cooking your own meals in the wilderness? If this sounds like your thing, the Outpost program is for you. We will be running a 4-day, 3-night adventure on the Flambeau River in the Flambeau State Forest. Scout groups that choose to participate will be guided by two staff members on this memorable journey.

On-Site Outpost Program There are different Outpost activities that may include wilderness day hikes, metal forging, lunch on the lake as you canoe Big Apple Lake, and wilderness survival camping.

You might enjoy a unique experience, like walking the hiking trail to the camp's famous bogs.

The Outpost programs are very flexible, allowing Scouts to make their own Outpost adventure.

Eagle Quest Focusing on leaning and rank advancement, there are numerous activities geared for both young and older boys alike, making Eagle Quest a destination for any camper!

Merit Badges

- Archery
- Astronomy
- Basketry
- Camping
- Canoeing
- Cinematography
- Climbing
- Cooking
- Environmental Science
- First Aid
- Fishing
- Geology
- Insect Study
- Kayaking
- Leatherwork
- Lifesaving
- Mammal Study
- Motorboating
- Orienteering
- Photography
- Pioneering
- Reptile Study
- Rifle
- Rowing
- Shotgun
- Small Boat Sailing
- Swimming
- Wilderness Survival
- Woodcarving

Boy Scout Camp Fees

Scouts	\$ 280.00
Adults	\$ 165.00

2015 Camping Schedule

- I. July 19 – July 25
- II. July 26 – August 1

A Great Scouting Adventure
Sign Up Today at www.PathwayToAdventure.org/camps/

Camp Napowan

Boy Scout Resident Camp

Camp Napowan is nestled between two beautiful lakes in the pine woods of Central Wisconsin and is one of the most exemplary summer camps in the Midwest. For over 65 years, Napowan has provided hands-on outdoor education and fun for Scouts from across the country.

Napowan offers pavilion dining to its campers, where Scouts have a special opportunity to get to know Napowan camp staff and be entertained with song and merriment. This also allows more time for Scouts to pursue their interests without having to deal with meal preparation.

Camp Napowan provides many unique opportunities for Scouts in all of the program areas offered. Traditional Aquatics, Shooting Sports, Nature, Handicraft and Scoutcraft take on new meaning when participating in the camp's exciting and focused programs. There is something at camp for Scouts of all ages.

Join us at Camp Napowan for a truly exciting adventure of a lifetime.

Camp Napowan is located at:
N4789 24th Ave
Wild Rose, WI 54984

Just a few of the Camp Napowan Adventures

Flintlock Pioneer Village is what sets the Camp Napowan adventure apart. It features a blacksmith shop with a functional forge, a printing press and beautiful log cabins.

SkyNet S.T.E.M. Lab is located in the new computer lab overlooking Lake Napowan. It houses Science, Technology, Engineering, and Math programs.

Verona challenges your creativity. Scouts will learn to communicate effectively and create works of art.

Sherwood focuses on Scout skills like outdoor survival techniques. These Scout skills activities are also intended to help Scouts develop basic camping, cooking, and other outdoor Scoutcraft skills.

Project C.O.P.E. uses individual and teamwork concepts to conquer various demanding challenges. You will have the opportunity to do climbing and rappelling at our spectacular Climbing Tower and you can even fly through the pine canopy on the ZIPLINE! This an age-appropriate program.

Boy Scout Camp Fees

Scouts	\$ 280.00
Adults	\$ 165.00

2015 Camping Schedule

I. June 14 – June 20	V. July 12 – July 18
II. June 21 – June 27	VI. July 19 – July 25
III. June 28 – July 4	VII July 26 - August 1
IV. July 5 – July 11	

Merit Badges

Archery
Architecture
Art
Astronomy
Automotive Mainten.
Basketry
Bird Study
Camping
Canoeing
Chemistry
Climbing
Communications
Cooking
Emergency Prepare.
Environmental Sci.
Fingerprinting
First Aid
Fishing
Forestry
Geocaching
Geology
Graphic Arts
Horsemanship
Indian Lore
Kayaking
Leatherwork
Lifesaving
Mammal Study
Metalwork
Motorboating
Moviemaking
Music
Nature
Orienteering
Painting
Photography
Pioneering
Pottery
Public Speaking
Reptile & Amphibian
Rifle
Rowing
Salesmanship
Scouting Heritage
Shotgun
Small Boat Sailing
Space Exploration
Swimming
Weather
Wilderness Survival
Woodcarving

An Adventure of a Lifetime

Sign Up Today at www.PathwayToAdventure.org/Camps/

CAMP SHIN-GO-BEEK

Boy Scout Resident Camp

Camp Shin-Go-Beek Located in Central Wisconsin in a picture-perfect wilderness, our camp provides a wonderful outdoor experience. With a backdrop of beautiful forests and glacial lakes, Scouts will find there is a great opportunity at Shin-Go-Beek to participate in outstanding programs like the “Eagle Quest.”

The camp’s 550 acres of natural splendor are home to 11 scenic campsites.

Meal preparation is done for campers and served in Shin-Go-Beek’s Dining Hall. And no meal is complete without skits, and songs from the Staff.

For older Scouts and adult leaders, camp also offers courses in Trek Safely, Safe Swim Defense, Safety Afloat, Climb On Safely, as well as BSA Aquatics Supervision Swimming and Water Rescue, and Leave No Trace. Youth Protection Training is also available for leaders.

This camp has great outdoor Scouting programs. The Scoutcraft area provides opportunities that cover a full array of traditional camp merit badges. The Camp Shin-Go-Beek staff offers every Scout a very dynamic Aquatics program including basic swim instruction. Scouts will be able to participate in Shooting Sports, Climbing and Handicraft, and Ecology/Conservation. Camp Shin-Go-Beek staff is dedicated to making your adventure special.

The Eagle Quest Department at Camp Shin-Go-Beek has many of the same values as a traditional “First Year Camper” program, but goes significantly more in depth. The program focuses on rank advancement with numerous activities geared for both younger and older Scouts. Eagle Quest is a destination for all campers.

Outpost Programs

High Adventure Canoe trip takes you on a 4-day and 3-night scenic adventure on the Flambeau River. Two of our experienced staff will be your guides as you paddle along this beautiful river. You will have great opportunities to fish, swim, have fun, and even tackle several sets of rapids.

Logger’s Camp Outpost lets Scouts use a real forge to make tools out of hot steel. Scouts will have an opportunity to make musket balls, cook cobbler, and work on their Paul Bunyan Award.

Wilderness Survival Scouts get to work on their survival skills, building a shelter and sleeping in the backwoods of camp. Guided by experienced staff, Scouts will have fun braving the Northwoods of Wisconsin.

Merit Badges

- Archery
- Astronomy
- Basketry
- Camping
- Canoeing
- Climbing
- Cooking.
- Environmental Science
- First Aid
- Fishing
- Geology
- Insect Study
- Kayaking
- Leatherwork
- Lifesaving
- Mammal Study
- Motorboating
- Moviemaking
- Nature
- Orienteering
- Photography
- Pioneering
- Reptile & Amphibian
- Rifle
- Rowing
- Shotgun
- Small Boat Sailing
- Soil & Water Conserv.
- Swimming
- Wilderness Survival
- Woodcarving

Camp Shin-Go-Beek is located at:
N 7015 24th Lane
Waupaca, WI 54981

Boy Scout Camp Fees	
Scouts	\$ 280.00
Adults	\$ 165.00

2015 Camping Schedule	
I.	July 5 – July 11
II.	July 12 – July 18

A Great Scouting Adventure
Sign Up Today at www.PathwayToAdventure.org/Camps/



Camp Wolverine

The Adventure Begins at Owasispe Scout Reservation

Boy Scout Resident Camp

Camp Wolverine is an Owasispe Scout Reservation camp located on 4,800 acres of wilderness totally within the Cleveland Creek watershed. The creek is a tributary of the White River, and is completely surrounded by Owasispe's boundaries. A dam on the creek forms the lake where Camp Wolverine is located.

Lake Wolverine has a highly protected ecosystem, on whose waters no gas engines are allowed. This lake offers its visitors peaceful serenity. Our Scouts enjoy fishing, rowing, kayaking and canoeing on this ecologically pure lake.

Camp Wolverine offers great programs in Scoutcraft, Handicraft, Shooting Sports, and Ecology/Conservation. The camp's Aquatics program is done at the large swimming pool near the lodge.

The camp has 25 sites with facilities that include hot water showers, wash stands, and flush toilets. The site locations are conducive to camping using the patrol method.

Each meal is brought to your site hot and ready to serve in Patrol fashion. This allows Scouts more time to enjoy this beautiful camp.

Camp Wolverine is located at:
Owasispe Scout Reservation
9900 Russell Road
Twin Lake, MI 49457

Owasispe Adventure and Outpost Programs

E Uerner Goodman Scout Museum View over 100 years of Scouting history while you earn Scouting Heritage merit badge.

Diamond O Ranch The ranch offers Scouts exciting and fun horseback riding programs, including Horsemanship merit badge.

Project C.O.P.E. This Challenging Outdoor Personal Experience builds teamwork and self confidence. It also houses the Climbing Wall, where Scouts can earn the Climbing merit badge.

Mountain Biking View seldom-seen areas of camp, riding up to 23 miles of Michigan's top-rated bike trails. Earn Cycling merit badge.

Fossett Sail Base Enjoy getting your Motorboating, Sailing and Watersports merit badges; fish from a pontoon boat and go tubing in the lake.

White River Canoe Trips Take a 3 hour or 6 hour canoe trip through the Manistee National Forest.

Radio Outpost Use the camp's Ham Radio system and tower to talk to people in far away places as you earn Radio merit badge.

Owasispe Trail System Hike the trails at Owasispe and take in the remarkable and diverse ecosystem.

Merit Badges*

Archery
Art
Automotive Maint.
Basketry
Bird Study
Camping
Canoeing
Climbing
Cooking
Cycling
Emergency Prepare.
Environmental Science
First Aid
Fish & Wildlife
Fishing
Forestry
Golf
Horsemanship
Indian Lore
Kayaking
Leatherwork
Lifesaving
Mammal Study
Motorboating
Nature
Orienteering
Photography
Pioneering
Pulp & Paper
Radio
Rifle
Rowing
Salesmanship
Sculpture
Scouting Heritage
Shotgun
Small Boat Sailing
Space Exploration
Swimming
Theater
Water Sports
Wilderness Survival
Woodcarving

*Some merit badges may be rotated in & out each summer to offer more variety to our returning Scouts.

Boy Scout Camp Fees

Scouts	\$ 280.00
Adults	\$ 165.00
Saturday Early Arrival	\$ 80.00

2015 Camping Schedule

I. June 28 – July 4	IV. July 19 – July 25
II. July 5 – July 11	V. July 26 – August 1
III. July 12 – July 18	VI. August 2 – Aug. 8

America's Premier Scout Camp, Established in 1911
Sign Up Today at www.PathwayToAdventure.org/Camps/

Reneker Family Camp

The Adventure Begins at Owasippe Scout Reservation

Scouting Family Resident Camp

RENEKER FAMILY CAMP

For five decades, Camp Reneker has provided quality camping experiences to Scout families at a very affordable cost. Nestled at the south end of Owasippe Scout Reservation, Reneker Family Camp provides outdoor recreation programs for the whole family.

Camp Reneker offers 40 cabins arranged in two clusters of 20. Our cabins sleep 4-5 people and have kitchens and living rooms. Each cluster has a central, private toilet and shower facility. These two central buildings also have laundry facilities.

Other features available when staying at Family Camp include a swimming pool, basketball courts and a trading post. All of this comes with a dedicated staff whose goal is to assist each family in getting the most out of their camp experience. Join us for all the fun and adventure.

For generations, Reneker has been providing camping families with an experience that makes Owasippe their very own. Join us today.

Reneker Family Camp is located at:
Owasippe Scout Reservation
9900 Russell Rd
Twin Lake, MI 49457

CAMP RENEKER PROGRAM

Camp Reneker offers a wide range of programs for all ages. The day starts with age-appropriate activities and continues into the afternoon and evening with family-oriented programs.

Our trained and dedicated staff lead family campers through activities that include Swimming, Crafts, Hiking, BB Gun Shooting, Archery and more.

There are also age-appropriate Outpost opportunities available, such as riding at the Diamond O Ranch, a Challenging Outdoor Personal Experience, Climbing, and Sailing.



Staff-led themed program for kids



Scout Family Cabin Rental Fees

With family member camping at Owasippe with Troop	\$ 320.00
Scouting families with no Scout / Scouter camping	\$ 420.00
Saturday early arrival at camp	\$ 80.00

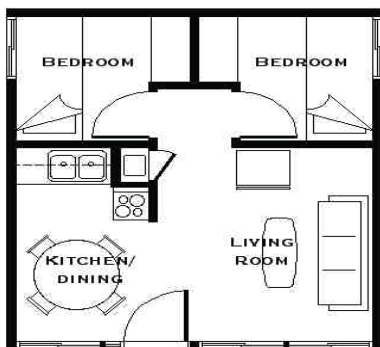
2015 Camping Schedule

I. June 28 – July 4	IV. July 19 – July 25
II. July 5 – July 11	V. July 26 – August 1
III. July 12 – July 18	VI. August 2 – Aug. 8

Program Highlights*

(Activity fee for participants)

- Morning**
age 4-6 & 7-9
- Crafts & Games
- Swim basics
- Short Hikes
- age 10-12
- Daily Craft/Other
- Swim Lessons
- Other planned activities
- age 13-17
- COPE Team Building
- Swim/other planned
- Adult (optional)
- Classy Crafts
- Cooking
- Water Aerobics
- Hiking
- Afternoon
- Open Swim
- Team Games
- Volleyball/Basketball
- Bean bag toss tourn.
- BB Gun & Archery
- Guided Hikes
- Evening
- Ice Cream Social
- Family Pot Luck
- Dinner & Dance Party
- Closing Campfire
- *Subject to change



Cabin Floor Plan

America's Premier Scout Camp, Established in 1911

Sign Up Today at www.PathwayToAdventure.org/Camps/





Boy Scout & Cub Scout Resident Camp Locations

1. Camp Blackhawk
Camp Wolverine
Reneker Family Camp
Owasippe Scout Reservation
9900 Russell Road
Twin Lake, MI 49457
231-894-4061

2. Camp Mach-Kin-O-Siew
W11925 Outlet Drive
Elcho, WI 54438
Phone: 715-275-3880

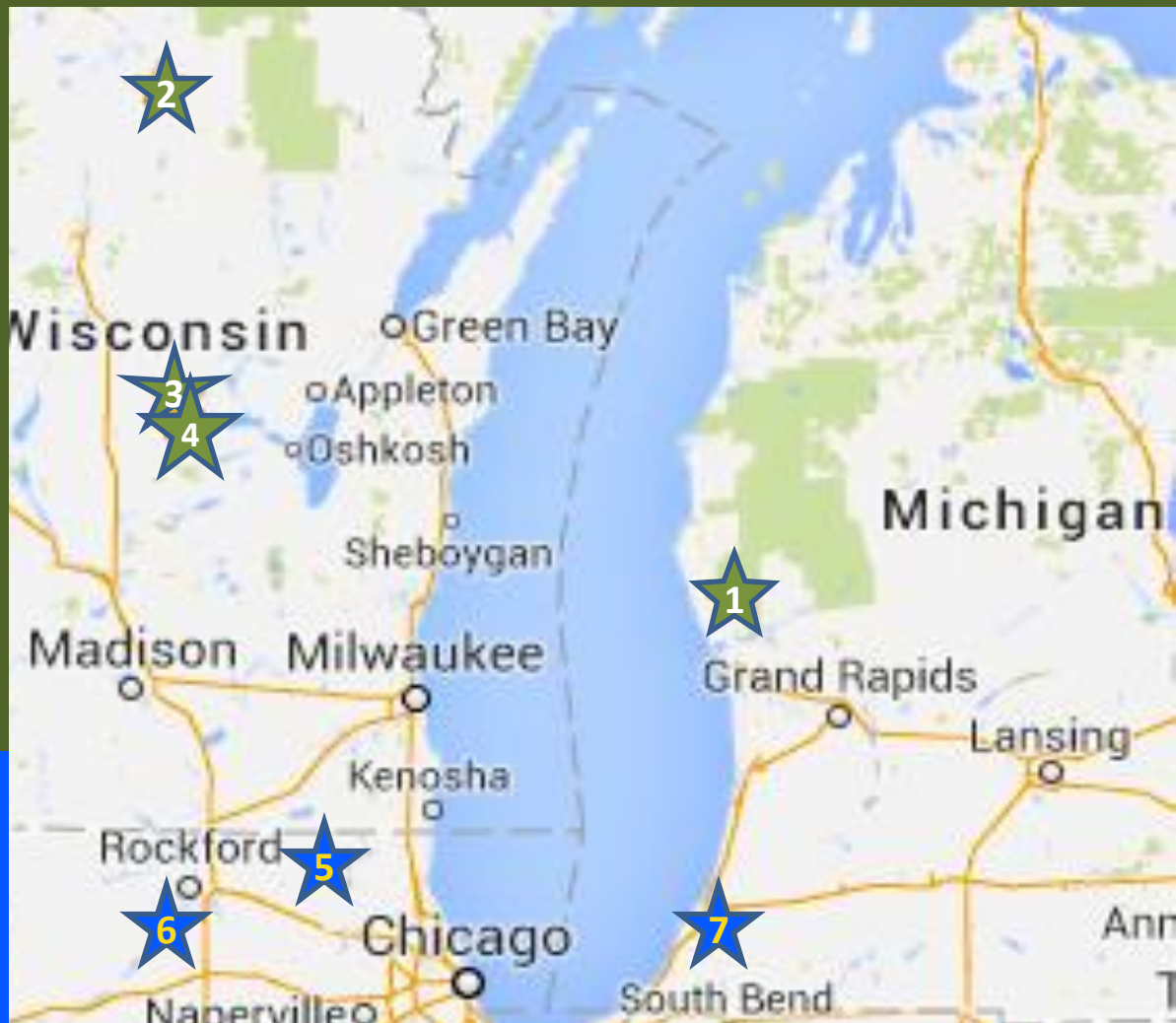
3. Camp Shin-Go-Beek
N7015 24th Lane
Waupaca, WI 54981
Phone: 715-258-2271

4. Camp Napowan
N4789 24th Ave
Wild Rose, WI 54984
Phone: 920-622-3681

5. Camp Lakota
Cub Resident Camp
2050 Deep Cut Road
Woodstock, IL 60098
847-824-6877

6. BSA Adventure Camp
Cub Resident Camp
3998 S Knoll Road
Rochelle, IL 61068
231-894-4061

7. Camp Frank S. Betz
Webelos Resident Camp
3858 Snow Road
Berrien Springs,
Michigan 49103
269-471-9429



CAMPERSHIPS

We are committed to making your camp adventure possible. If you belong to a Pack, Troop, or Venture Crew in our Council and could use some assistance with the cost of attending camp, please apply for one of our need-based camp scholarships known as Camperships. For more information, please visit the website below. Campership funds may be limited.

Sign Up Today at www.PathwayToAdventure.org/Camps/

Camp Frank S. Betz

WEBELOS Resident Camp

Camp Frank S. Betz

STUNNING! This is what you will say when you see this beautiful camp, which sits on the bank of the St. Joseph River. This extremely scenic property is complete with Shooting Sports, a Dining Hall, and a waterfront perfect for swimming, boating and fishing.

Camp Frank S. Betz is a 57-acre preserve that has been in continuous service since 1922. It contains a variety of terrain and rugged topography. Camp Betz offers beautiful wooded campsites for tent camping. Flush toilets and showers are available. While at camp, don't miss the opportunity to explore the property and enjoy the beauty it offers.

When you join us at Camp Betz, you will be able to relax while our staff prepare delicious meals for you. With the cooking and meal cleanup done for you, you and your Scout will be able to spend more time enjoying the program and the amenities camp life has to offer.

Family Camp At Camp Betz!

Spend a weekend camping with your family and enjoy all of the great age-appropriate programs available at camp. Best of all, Saturday meals are included as well as Sunday breakfast. Sign up today for one of these fun weekends!

2015 Camp Betz

Family Camp Schedule

Session I. July 10 – 12

Session II. July 17 – 19

Family Camp Fee

<u>Paid by 5/1/2015</u>	<u>After 5/1/2015</u>
Adult \$ 55.00	\$ 75.00
Youth \$ 55.00	\$ 75.00

Webelos Camp Program

This is a special camp designed just for 4th & 5th grade Scouts. The program focuses on Adventures and Activity Pins, and the transition from Cub Scouts to Boy Scouts.

The new Cub Scout Adventures program rolls out June 1st. Webelos beginning this great new Adventure program at Camp Betz will have the opportunity to earn:

- 1st Responder
- Castaway
- Aquanaut
- Into the Wild
- Shooting Sports
- Camper

2nd year Webelos Scouts can either do the new Adventure program, the traditional program, or a combination of the two.

Traditional program achievements will be given to leaders at the conclusion of the camp for 2nd year Webelos wishing to work on those requirements.

Don't miss out on a great summer camp experience for you and your Webelos Scout.

Camp Betz is located at:
3858 Snow Road
Berrien Springs, MI 49103

2015 Camp Betz

Webelos Camp Schedule

Session I. July 13- July 17

Session II. July 20 – July 24

Webelos Camp Fees

	<u>Paid By 5/1/2015</u>	<u>After 5/1/2015</u>
Scouts	\$ 210.00	\$ 230.00
Adults	\$ 110.00	\$ 130.00



Sign Up Today at www.PathwayToAdventure.org/Camps/

Camp Lakota

Cub Scout Resident Camp

Adventure at Camp Lakota!

The 2015 Camp Lakota theme is ENERGY! We will explore all the different types of energy you use every day. From the gas to power your car, and the food to power your body, to the electricity to power your computer. We will also look at all the different ways energy can be generated. It will be a shocking experience. Our great staff is ALL CHARGED UP to teach you about ENERGY!

Camp Lakota is 300 acres of forest, prairie, and wetlands ready and waiting for you and your Scouts to enjoy all that the camp has to offer. Some features of the camp are: BB & Archery ranges, a 6-sided climbing tower with 3 heights, a bouldering wall, and an in-ground heated swimming pool. Lakota has showering facilities and a variety of pit & flushing restrooms throughout the property.

At Camp Lakota, your Cub Scouts will be able to experience the outdoors as well as engaging educational programming.

When you join us at Cub Scout Resident Camp, you will be able to enjoy a 4-day 3-night stay, while our staff prepares delicious meals for you, which are served in our dining area.

Camp Lakota is located at:
2050 Deep Cut Road
Woodstock, IL 60098

More Camp Lakota Adventures!

Boy Scout STEM Camp - August 13 - 16
Winter Camp - December 27 - 28
Visit our website below for information about numerous 1 day fun events happening at Camp Lakota .

Resident Camp Program

During the course of your Cub Scout's stay, he will have the opportunity to experience exciting adventures under the guidance of our trained and experienced staff.

You and your Scout will have an opportunity to swim, shoot BB guns, and practice your archery skills at the range. Scouts will be able to take a nature hike and enjoy the great outdoors.

Your Scout will be earning a variety of rank-specific achievements while having fun!

2015 Cub Scout Resident Camp Sessions

Session I. June 18 – June 21
Session II. July 16 – July 19

Cub Scout Resident Camp Fees Paid By 5/1/2015 After 5/1/2015

Scouts	\$ 165.00	\$ 185.00
Adults	\$ 80.00	\$ 100.00



Lakota Family Camp

Spend a weekend camping with your family enjoying all the great age-appropriate programs available at camp.

Family Camping Schedule

Session I. July 24 – 26
Session II. October 9 – 11

Family Camp Fee
\$ 25.00 per person

Meals may be purchased a la carte.
Breakfast \$5, Lunch \$7, Dinner \$7

Sign Up Today at www.PathwayToAdventure.org/Camps/

BSA Adventure Camp

Cub Scout Resident Camp

Join us for a Pirate Adventure on the High Seas

Lake Gladys is the beautiful focal point of BSA Adventure camp with a swimming waterfront, boating and fishing pier. A Scout is reverent at our beautiful and peaceful chapel.

With 500 acres, there is something for everyone to enjoy at BSA Adventure Camp! And when you join us at Adventure Camp, you will be able to enjoy sleeping in the comfort of your own tent. The Adventure Camp camping area has flush toilets and clean, modern, hot showers.

Join the Buccaneers of Lake Gladys for all the fun and expect to meet friendly pirates during your BSA Adventure Camp stay.

BSA Adventure Camp is located at:
3998 S. Knoll Road
Rochelle, IL. 61068

Adventure Family Camp

Spend a night camping with your family and friends. Enjoy all of the great age-appropriate programs available at camp. Meals included.

Family Camping

June 20 – 21

July 11 – 12

Weekend in Illinois

A great experience for Scout and parent/guardian to enjoy an amazing program while camping for one night. (No siblings, please) Meals included.

Weekend in Illinois Sessions

July 18 – 19

June 27- 28

Family Camp & Weekend in IL Fee

Each Adult/Each youth Paid By:

May 1 \$ 85.00 / After May 1 \$ 105.00

Note: Parents / guardians are responsible for supervising their children at all times.

About Resident Camp

Cub Scout Resident Camp is open to all registered Cub Scouts, Tiger – Webelos 2. You may choose to register as a Pack or individually. If registering individually, a parent / guardian must attend with the Scout.

No matter which date or program you choose, you and your Scout will have the chance to swim, boat, fish, shoot BB & Archery, take on the bouldering wall, hike, and enjoy the great outdoors.

In true Scouting form, while having fun at camp your Scout will also be earning an array of rank-specific achievements. A complete list of achievements will distributed upon completion of camp.



2015 Camping Sessions

I: June 21- June 24 IV: July 5- July 8
II: June 24- June 27 V: July 8- July 11
III: June 28- July 1 VI: July 12- July 15

Cub Scout Resident Camp Fees

	Paid By 5/1/2015	After 5/1/2015
Scouts	\$ 165.00	\$ 185.00
Adults	\$ 80.00	\$ 100.00

Sign Up Today at www.PathwayToAdventure.org/Camps/



Take Flight this summer with Cub Scout Day Camps

Join us for 3 days of exhilarating experiences including Shooting Sports, STEM (Science, Technology, Engineering, & Mathematics) activities, Crafts, and much more! Each Scout rank will receive a list of the many achievements they can earn during camp. You may register as a Pack or individually. If registering individually, a parent must also attend.



**Our Savior's United
Methodist Church
701 E. Schaumburg Rd
Schaumburg, IL**

**June 23 - 25, 2015
Schaumburg, IL**



**Barrington
Presbyterian Church
6 Brinker Road
Barrington, IL**

**July 28 - 30, 2015
Barrington, IL**



**Merryville Academy
1150 N. River Road
Des Plaines, IL**

**July 14 - 16, 2015
Des Plaines, IL**

Day Camp Scout Fee
Paid Before 5/1 Paid after 5/1
\$ 60.00 \$ 85.00



**This is a Twilight Camp,
which runs during the
evening for 3 nights.**

**July 28 - 30, 2015
Wheeling-Buffalo
Grove**



**Stevenson Park
3105 Washington Blvd
Bellwood, IL**

**August 4 - 6, 2015
Bellwood, IL**

For more Information & to sign up visit: PathwayToAdventure.org/Camps/

Cub Scout Day Camps

6



All Saints Cathedral
9401 W. Higgins Ave.
Chicago, IL
Program Director
Shar Wyatt

June 24- 26, 2015
Chicago, IL (North)

Welcome to our hidden treasure. Our location has ample parking, huge sunny fields, plenty of shade, and new indoor restrooms. You will find exciting program from the time you arrive till the closing ceremony. Our camp offers a dedicated and qualified staff, Archery, a Sling Shot Range, Crafts, Nature Hikes, Sports, STEM activities, and advancement opportunities. Every Scout receives a T-shirt, a patch and great memories! Our location adjoins Rosemont, Des Plaines, Park Ridge, and Chicago. Our camp is close to the CTA Blue Line available at Cumberland and Rosemont.

Youth Fee

Paid by April 15 \$60.00 After April 15 \$85.00
Adult/Walker Fees \$12.00

7



Trinity Christian College
6601 W. College Dr.
Palos Heights, IL
Program Director
Helen Gesell

July 14 – 16, 2015
Palos Heights, IL

Join us for three days packed with fun, advancement and learning. Scouts should be prepared for great fun at the BB and Sling Shot ranges. For Webelos, we have the Archery Range. Visit the Skills, Leatherwork, STEM, Nature, Woodworking, Crafts and Fitness areas. Each morning starts with an opening flag ceremony at 8:15 a.m. (Pack flags are encouraged), and ends with a closing ceremony at 3:45. On Thursday, the youth will put on a show for the parents. Pack a lunch and join the fun. Scouts and their siblings are welcome to register.

Youth Fee

Paid by May 15 \$60.00 After May 15 \$85.00
Adult/Walker Fees \$12.00

8



Pleasant Dale Park District*
7425 Wolf Road
Burr Ridge, IL
***Location Tentative**

Session 1: July 8 – 10 Session 2: July 21 – 23
Burr Ridge, IL

This camp is open to all Tigers, Wolves, Bears, and Webelos. We will offer Archery, BB Gun Target Shooting, Water Bottle Rockets, and much more. Scouts will rotate through six exciting stations each day. Our local Fire Department usually stops by and cools us off one of the days.

Youth Fee

Paid Before May 1 \$60.00 Paid after May 1 \$85.00

9



Hodgkins Park District
8997 Lyons St.
Hodgkins, IL

August 14 – 16 (Tentative dates)
Hodgkins, IL

Take time with your friends and learn how to take flight in nature. Have fun with wildlife conservation and learn what animals from our area are endangered. We also have a Splash Pad, lunchtime entertainment, Crafts, Games and more. Hope to see you there!

Youth Fee

Paid Before May 1 \$60.00 Paid after May 1 \$85.00

For more Information & to sign up, visit: PathwayToAdventure.org/Camps/

Cub Scout Day Camps



Cubs are taking flight! Cub Scout Day Camp is 4 fun-filled days of adventure for Scouts who will be in the 1st through 5th grades in the fall. As your Scout soars through the week, he will discover the aspects of flight; air, space and gravity in addition to participating in Archery, BB gun shooting, Woodworking, and Sports. Cubs will also have advancement opportunities and learn valuable Scout Skills. These Day Camps will run Tuesday through Friday at the locations below.

10

**July 7-10
Homewood, IL**

Izaak Walton Forest Preserve
1100 Ridge Road
Homewood, IL

11

**July 14-17
Orland Park, IL**

Christ Evangelical Lutheran
Church
14712 S. 94th Ave
Orland Park, IL

12

**July 21-24
Merrillville, IN**

St. Elijah's Serbian Hall
8700 Taft Street
Merrillville, IN

13

**July 28-31
Hammond, IN**

Cabela's Outdoor Store
7700 Cabela Drive
Hammond, IN

Day Camp Scout Fee
Paid Before 5/1 Paid after 5/1
\$ 60.00 \$ 85.00

14

**August 4-7
Country Club Hills, IL**

St. John Church
4247 183rd Street
Country Club Hills, IL



CAMPERSHIPS

We are committed to making your camp adventure possible. If you belong to a Pack, Troop, or Venture Crew in our Council and could use some assistance with the cost of attending camp, please apply for one of our need-based camp scholarships known as Camperships. For more information, please visit the website below. Campership funds may be limited.

For more Information & to sign up, visit: PathwayToAdventure.org/Camps/

Cub Scout Day Camp Locations



DAY CAMP LOCATIONS

1. Schaumburg, IL
June 23 – 25, 2015
2. Barrington, IL
July 28 – 30, 2015
3. Des Plaines, IL
July 14 – 16, 2015
4. Wheeling, IL
July 28 – 30, 2015
5. Bellwood, IL
August 4 – 6, 2015
6. Chicago (North), IL
June 24 – 26, 2015
7. Palos Heights, IL
July 14 – 16, 2015
8. Burr Ridge, IL
July 8 – 10, 2015
July 21 – 23, 2015
9. Hodgkins, IL
August 14 – 16
(tentative date)
10. Homewood, IL
July 7 – 10, 2015
11. Orland Park, IL
July 14 – 17, 2015 12
12. Merrillville, IN
July 21 – 24, 2015
13. Hammond, IN
July 28 – 31, 2015
14. Country Club Hills, IL
August 4 – 7, 2015



Boy Scouts of America
1218 West Adams Street
Chicago, IL 60607-2802



2015 SUMMER CAMP ADVENTURE PROGRAMS

www.PathwayToAdventure.org/Camps/